



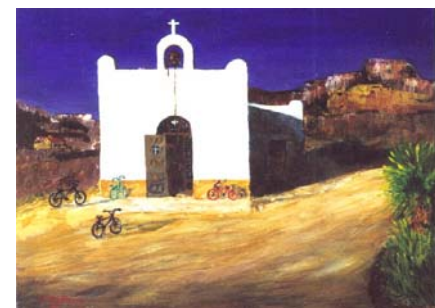
The Circuit Rider

Life in the Big Bend Episcopal Mission – April 2004

Ann Mathieu and Her Art Work



For much of the year, Ann Mathieu lives in Winchendon, Massachusetts, but she is also a long-time Lajitas resident in the winter months. She has a house on the high ground near Elle Webb. Over the years, Ann has helped Elle with enhancements to the church building. The olive tree that she and her husband Ralph (deceased) planted has taken root and grown higher than the



building. On a visit to France some years ago, Ann was particularly taken

by stations of the cross paintings in a French church. She took some photos and reproduced them in her own hand when she returned home. Her reproduced stations of the cross hang on the walls of the church building in Lajitas. Ann has recently done her own interpretation of the outside of the church. We are grateful for Ann's talent and faithful support.

There is Still Time to Donate \$25 and Win 5 Acres

80% of the tickets for the 5 acres of land just off the entrance road to Terlingua Ranch have been sold. There is still time to get in on this raffle that benefits the Big Bend Youth Club. Tickets are \$25 each. Contact Beth Garcia at 432/371-2304 or garciabeth2003@yahoo.com.

Libi Rhodes - Lay Member of Order of the Holy Cross

On Sunday, March 7th, during the Sunday service at St. Paul's Marfa, Libi Rhodes took her vows to become a lay member of the Order of the Holy Cross.

"I find that Benedictine Spirituality is the most meaningful, reasonable, understandable, and direct way to stay in the presence



Day of Discernment - April 3, 2004

The Diocesan Standing Committee and the Episcopal Discernment Committee invite all members of the Diocese of the Rio Grande to a day of prayer, sharing, and reflection, designed to help inform the preparation of the diocesan profile for the election of a bishop-coadjutor. The Day of Discernment for the Southeast and Southwest Deaneries will be on Saturday, April 3, 2004 from 8:30am to 3:00pm at St. Francis on the Hill, 6280 Los Robles Dr., El Paso. The facilitator will be The Rev. Canon Keith Brown from the Church Pension Fund, who is a published expert on leadership development and parishes. Everyone is welcome. Box lunches are available by calling the Diocesan Office at 800/388-1379 or email bcaldwell@dioceserg.org.

Visit the Diocesan Web Site at <http://riogrande.anglican.org>

Maxine and Otra Vez get Some Help

A number of local Terlingua residents have stepped up to help Maxine Haislip with the work load at the Otra Vez Thrift Shop. In addition to Berda Polichio and Ruth Oakes, pictured here with Maxine at the shop, Marsha Geffert, Lynna Waits, and Betty Reed also help out. Volunteers spend a lot of time sorting and preparing items for sale in addition to time at the shop helping customers. More donations of household and other items are always welcome. Many thanks to all.



of God in my daily life, both personal and communal. St. Benedict said, 'Listen carefully, my children, to the Master's instructions and attend to them with the ear of your heart.' I began my journey by doing my best to prayerfully listen, and my spiritual life became filled with a much deeper relationship with God. St. Benedict's Rule teaches that we are to live in the world with others and that our common life matters very much. I chose to take a vow as a lay member of the Order of the Holy Cross -- dedicated to a life of prayer, study, and interaction with others-- in order to help me grow."

Highlights from the Retreat

Over 20 people attended the annual mission retreat at Terlingua Ranch for a time of relaxation and reflection. In addition to study sessions on the Nicene Creed, participants toured the Otra Vez Thrift Shop, stopped by the Big Bend Youth Center, and attended "La Histora" at the Terlingua ghost town.



First Presbyterian in Marfa Starts Seniors' Ministry

Seniors -- spend a fun Thursday afternoon in Marfa in a creative and caring environment. First Presbyterian Church has begun a ministry for seniors, providing activities and supervised adult care in the Big Bend area. The group meets every Thursday from 2pm until 4:30pm in the church fellowship hall. Play games, do arts and crafts, or just come and visit. There will be videos to watch and sing-a-longs for guests to enjoy. This is an opportunity for socializing in a secure and well-planned environment. And it is free. From 4:30pm until 5:00pm, a chair exercise class will be offered to those who want to participate. The First Presbyterian Church of Marfa is located at the corner of Dean Street and Columbia. For more information, call 432-729-4950. Laughter is the best medicine, and fellowship is good for us all. Join in on Thursday afternoons!

Last Month's Question: Why do we call the Holy Scriptures the Word of God?

Answer: We call them the Word of God because God inspired their human authors and because God still speaks to us through the Bible.

This Month's Question: How is the Church described in the Bible?

Columbarium Units Ready

Columbarium units are ready for purchase at St. Paul's. The cost is \$400 per unit. For more information or to purchase units, contact the Vicar.



col-um-bar-i-um: a structure of vaults lined with recesses for cinerary urns.

Thanks from Youth Club

We received a card of thanks from the Big Bend Youth Club for the donations sent to the club earlier this year. The card was signed by the members. Over \$1700 was raised by the Big Bend Mission from the special appeal this past Christmas. Thanks go out to everyone who made a donation. Grant applications are out, but your help with short-term funding has made a critical difference.



Seder Supper Encore

April 8th following
Maundy Thursday Service
at 6 pm - St. Paul's, Marfa

Relive the Exodus as a
personal spiritual event!

See how this tradition has
shaped our liturgy.

Holy Week Services

Palm Sunday, April 4th - Regular Service Times

Maundy Thursday, April 8th
Holy Eucharist at St. Paul's - 6pm
(Seder Supper to follow)

Good Friday, April 9th
St. Paul's - Noon | St. James' - 2pm

Easter Day, April 11th - Regular Service Times



The Circuit Rider

The Big Bend Episcopal Mission
www.bigbendepiscopalmission.org

HC 65, Box 272
Alpine, TX 79830
888/BIG-BEND
(4325/371-2255)

judith@brooksddata.net
eponton@brooksddata.net
seth@equimax.com

Copy editor: Jeannette Miether



Hard Questions

In our joint life together in Christ, discussions about what we believe can serve to reinforce the understanding of our faith and strengthen our resolve in a faith-filled life. When these discussions reach the institutional level, we call the results "doctrine." Doctrine serves to inform the general public about what we believe, and it gives us a reference point of common spiritual understanding. When we disagree on matters of doctrine, unhappy divisions and factions sometimes arise within the Church. In extreme cases, denominational splits have occurred. It is all too easy to forget that disagreements on matters of doctrine are not what divide us. Sin is what divides us. Disagreements by themselves do not have the power to divide us. How we act toward each other as a result of those disagreements is what divides. When we react with judgment and stop looking for the light of Christ in each other, our sin has divided us. - Seth

The Desert Chihuahuan Challenge

On Saturday, March 13th, Chihuahuas from around the region gathered at the Big Bend Youth Club to race for the gold. The first ever "Desert Chihuahuan Challenge" drew entries from around the region. The proceeds benefited the Big Bend Youth Club and the Big Bend Family Crisis Center.



News coverage prior to the event extended as far as San Antonio. Greyhound racing enthusiasts expressed support and optimism for the unusual event. "Naduah" was the first heat winner, and "Chicarron" was the first-place winner in the Finals.



It is rumored that more than \$500 was raised at the event. Will there be another race next year? Racing enthusiasts better start training their entries now. The competition can only get tougher.



Big Bend Episcopal Mission
HC 65, Box 272
Alpine, TX 79830